



SIZE	ART. NO.	EAN NO.
10	417-10	7392626069961
11	417-11	7392626069985
8	417-8	7392626070004
9	417-9	7392626070028

## TEGERA® 417

Synthetic leather glove, fully lined, 0,7 mm synthetic leather, polyester, fleece, Cat. II, black, blue, grey, chrome free, soft, elasticated 360°, for allround work

### PROPERTIES

Good fingertip sensitivity, flexible, durable, good grip, good fit, extra comfortable

### SPECIFICATION

TYPE OF GLOVE Cold insulation gloves

CATEGORY Cat. II

SIZE RANGE (EU) 8, 9, 10, 11

PALM MATERIAL Synthetic leather

PALM THICKNESS 0,7 mm

BACK MATERIAL Polyester

LINING Fully lined

LINING MATERIAL Fleece

DEXTERITY 3

FASTENING Elasticated 360°

LENGTH RANGE 250-270 mm

COLOUR Black, Blue, Grey

PAIRS PER PACKAGE/CARTON 6/60

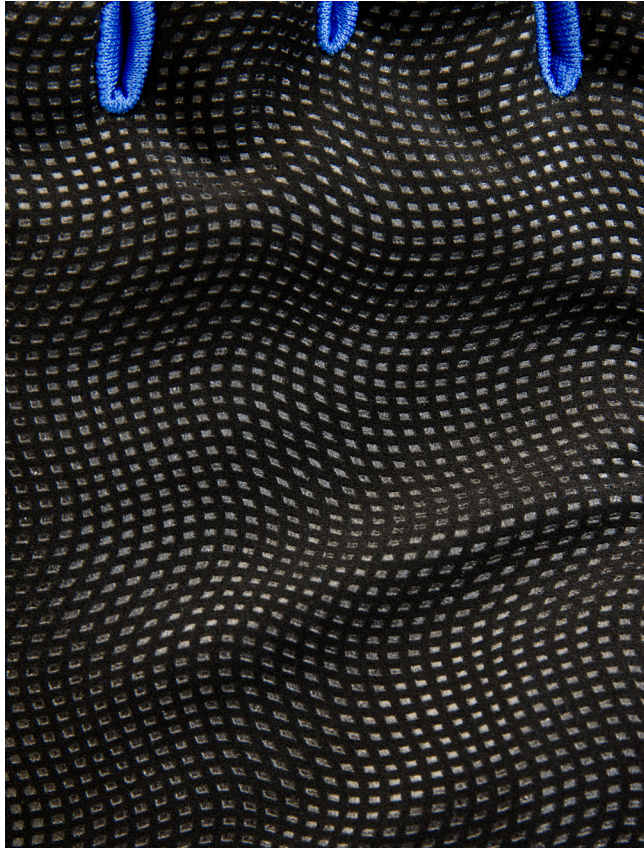
PIECES PER BOX 0

DISPLAY Hook with hangtag OUTER MATERIAL

SPECIFICATION Polyurethane, polyester, natural latex

INNER MATERIAL SPECIFICATION Polyester

All values for the specified product are indicated without tolerances and may vary to actual value for individual products. We reserve the right to modify or update the information in this document without prior notice.



## TEGERA® 417

### FEATURES

Chrome free, reinforced palm, soft

### PREVENTS RISK OF

Chrome allergy, abrasion injuries, blisters, grazes, scratches, lacerations, contact with dirt, drying out, chapping

### PRIMARY ENVIRONMENTS OF USE

Slippery environments, dry environments, cold environments, dirty environments

### PRIMARY AREAS OF USE

Inspection work, installation work, machine driving, machine operating, transport work, warehouse work

### PRIMARY INDUSTRIES OF USE

Agriculture, automotive, transportation, utilities, building and construction, logistics, HoReCa, facilities, service, retail

### TYPE OF WORK

Medium weight

 Cat. II

EN 420:2003  
+ A1:2009



EN 388:2016  
1131X



EN 511:2006  
11X



All values for the specified product are indicated without tolerances and may vary to actual value for individual products. We reserve the right to modify or update the information in this document without prior notice.

2021-01-09

2(3)

**ejendals**  
PROTECTING HANDS AND FEET

**EJENDALS AB**

Box 7, SE-793 21 Leksand, Sweden

Phone +46 (0) 247 360 00

Fax +46 (0) 247 360 10

info@ejendals.com

order@ejendals.com

www.ejendals.com

## TEGERA® 417

### EU-TYPE EXAMINATION

2777 Satra Technology Europe Ltd Bracetown Business Park, Clonee, Dublin 15, Dublin, Ireland

### COMPLIANCE DESCRIPTION

EN 420:2003 + A1:2009 Protective gloves - general requirements and test methods

EU 2016/425

EN 388:2016 Protective gloves against mechanical risks

Property	Level Achieved	(Maximum Performance)
a) Resistance to abrasion (No. of revolutions)	1	(4)
b) Cut resistance (Index)	1	(5)
c) Tear resistance (N)	3	(4)
d) Puncturing resistance (N)	1	(4)
e) Cut resistance, EN ISO 13997 (N)	X	(F)
f) Impact protection, EN 13594:2015		(P)

### EN 388 – Testing

(specifies the requirements that apply for each safety level).

Level of protection/Performance level	1	2	3	4	5
a) Resistance to abrasion (No. of revolutions)	100	500	2 000	8 000	
b) Cut resistance (Index)	1,2	2,5	5,0	10,0	20,0
c) Tear resistance (N)	10	25	50	75	
d) Puncturing resistance (N)	20	60	100	150	

Level of protection/Performance level	A	B	C	D	E	F
e) Cut resistance, EN ISO 13997 (N)	2	5	10	15	22	30

Level of protection/Performance level	P
f) Impact protection, EN 13594:2015	Pass (Level 1 ≤ 9 kN)

EN 511:2006 Protective gloves against cold



CE Cat. II

EN 420:2003  
+ A1:2009



EN 388:2016  
1131X



EN 511:2006  
11X



All values for the specified product are indicated without tolerances and may vary to actual value for individual products. We reserve the right to modify or update the information in this document without prior notice.

2021-01-09

**ejendals**  
PROTECTING HANDS AND FEET

**EJENDALS AB**

Box 7, SE-793 21 Leksand, Sweden

Phone +46 (0) 247 360 00

Fax +46 (0) 247 360 10

info@ejendals.com

order@ejendals.com

www.ejendals.com